

# INDEX MAP OF MIDDLEFIELD VILL.

JAN. 1, 1986

P-22

P-23

SCALE 1"=330'

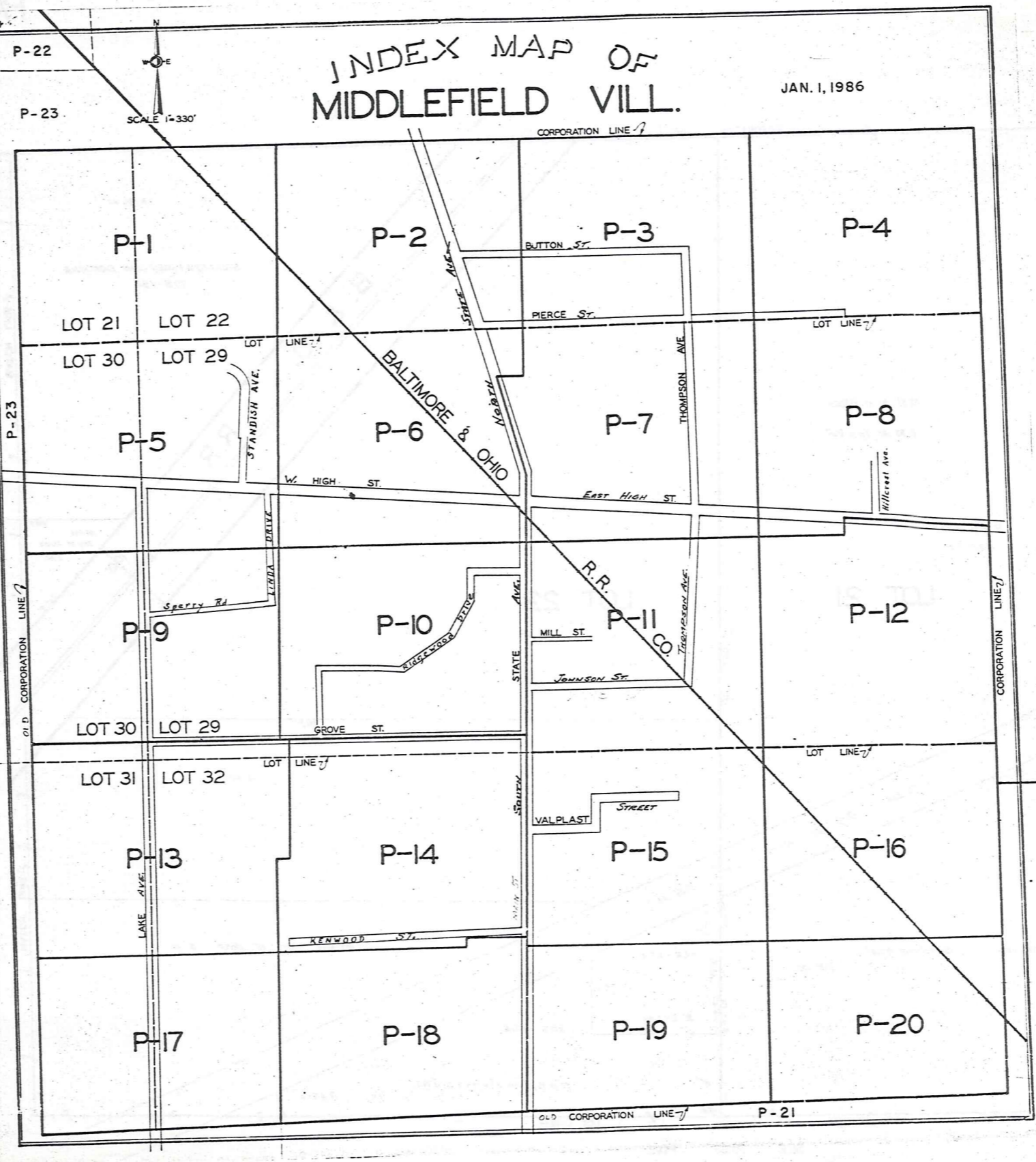
P-23

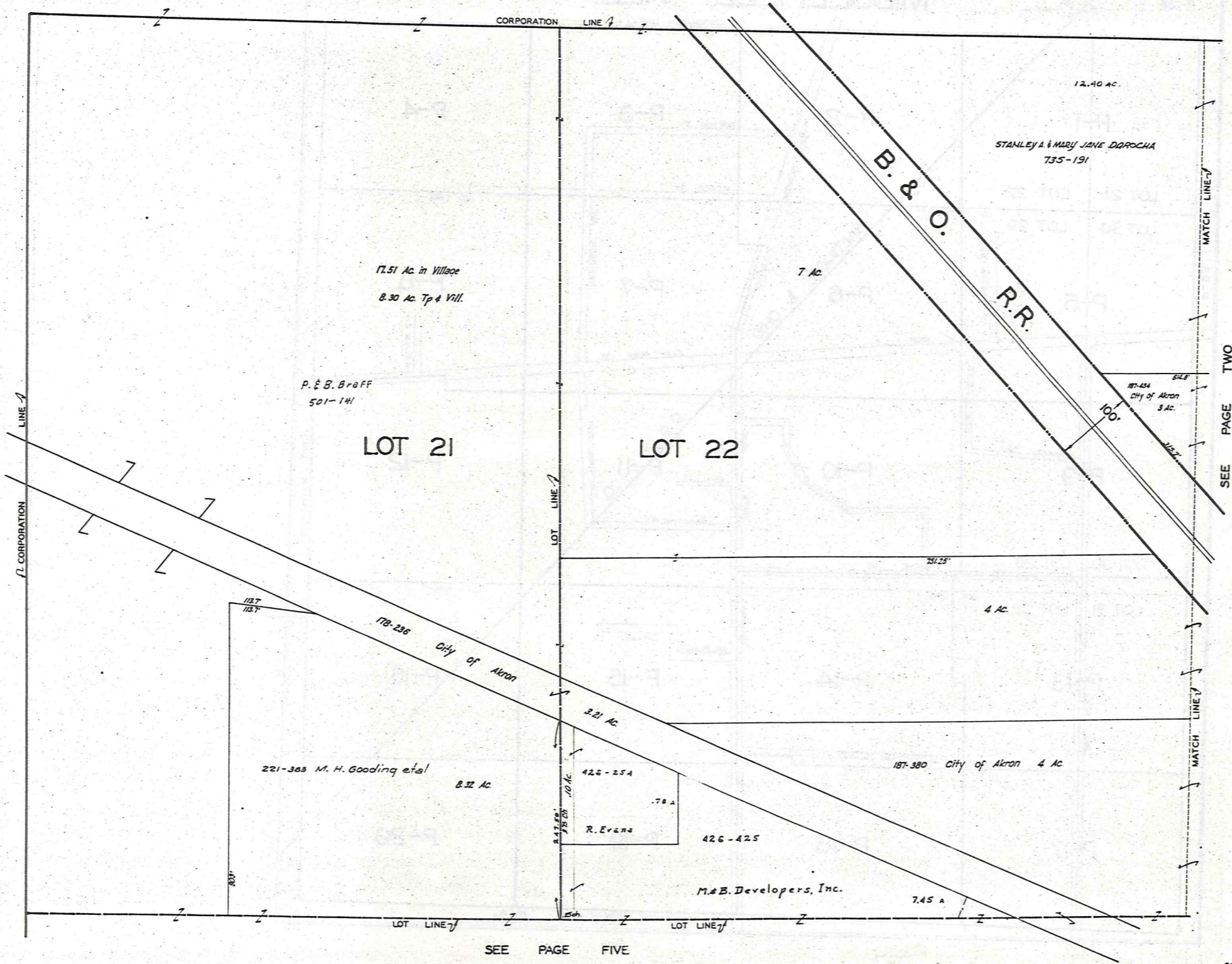
OLD CORPORATION LINE

CORPORATION LINE

OLD CORPORATION LINE

P-21



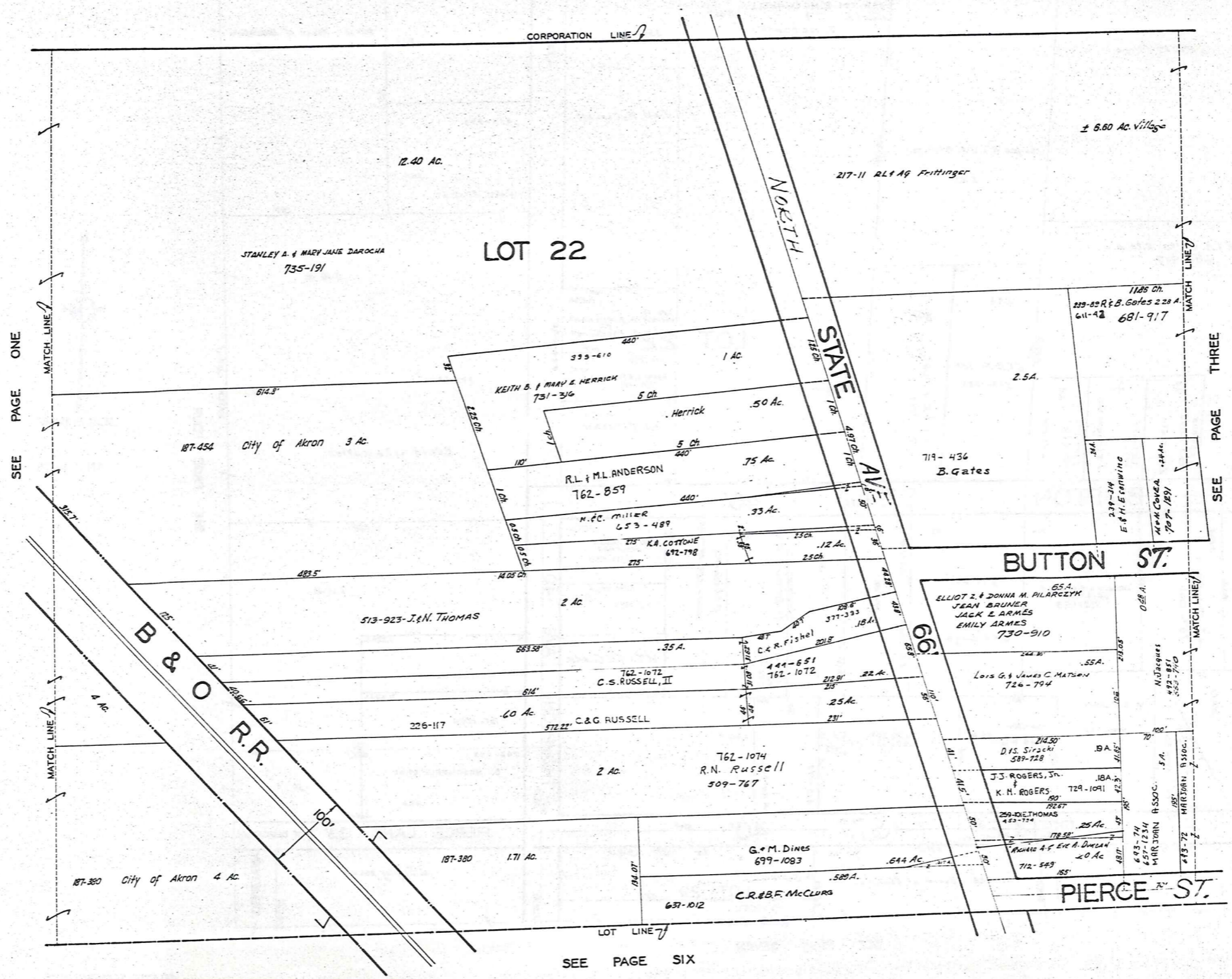


N  
W  
E  
SCALE 1"=66'  
JAN. 1, 1986

SEE PAGE TWO

SEE PAGE FIVE

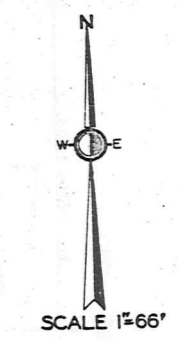
RELATIVE REPRESENTATION  
MIDDLEFIELD VILLAGE  
PG. 1



SEE PAGE ONE

SEE PAGE THREE

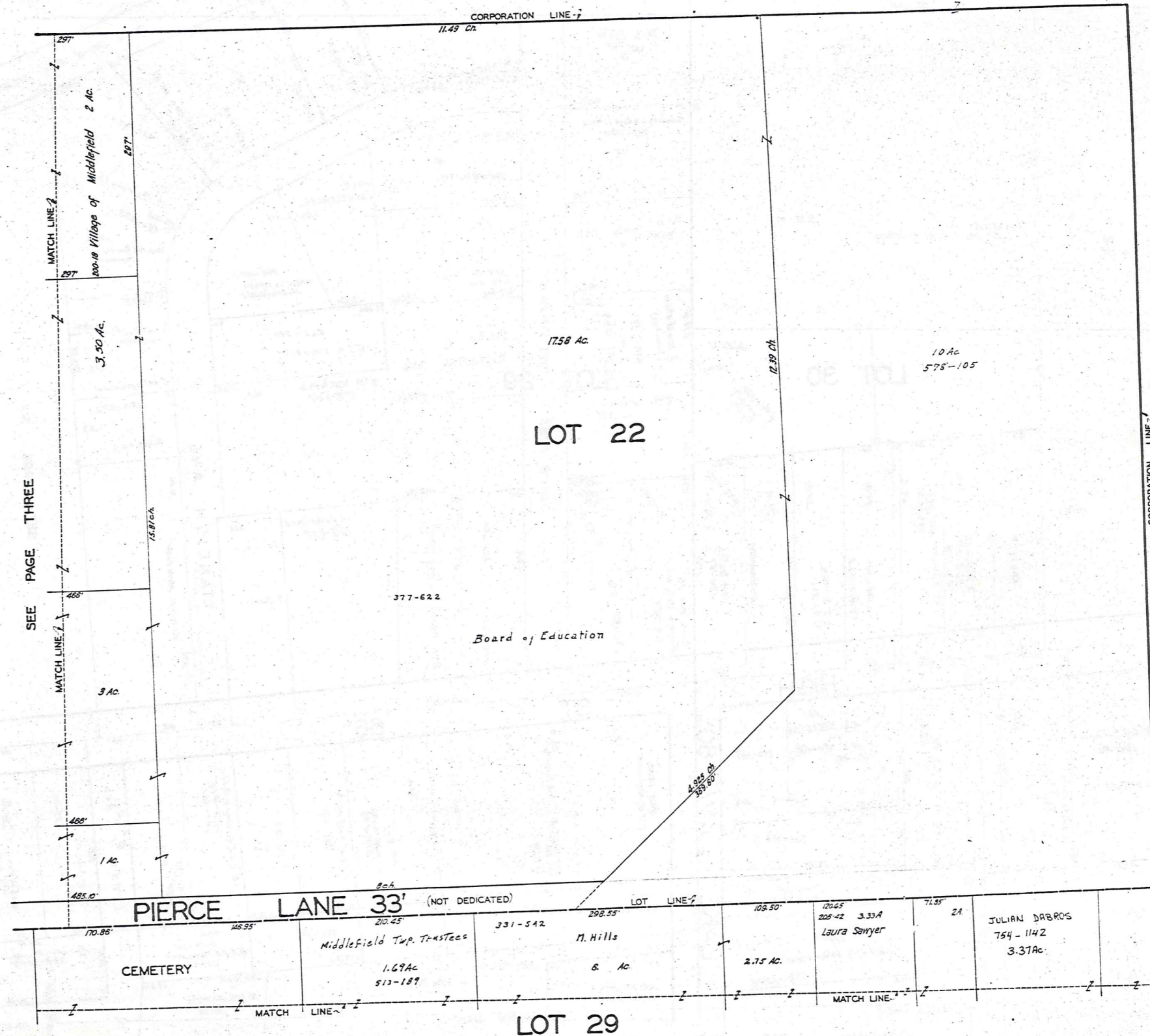
SEE PAGE SIX



JAN. 1, 1986

RELATIVE REPRESENTATION  
MIDDLEFIELD VILLAGE  
PG. 2





SCALE 1"=66'

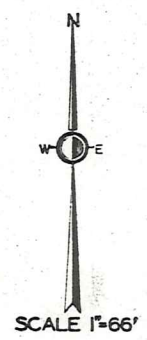
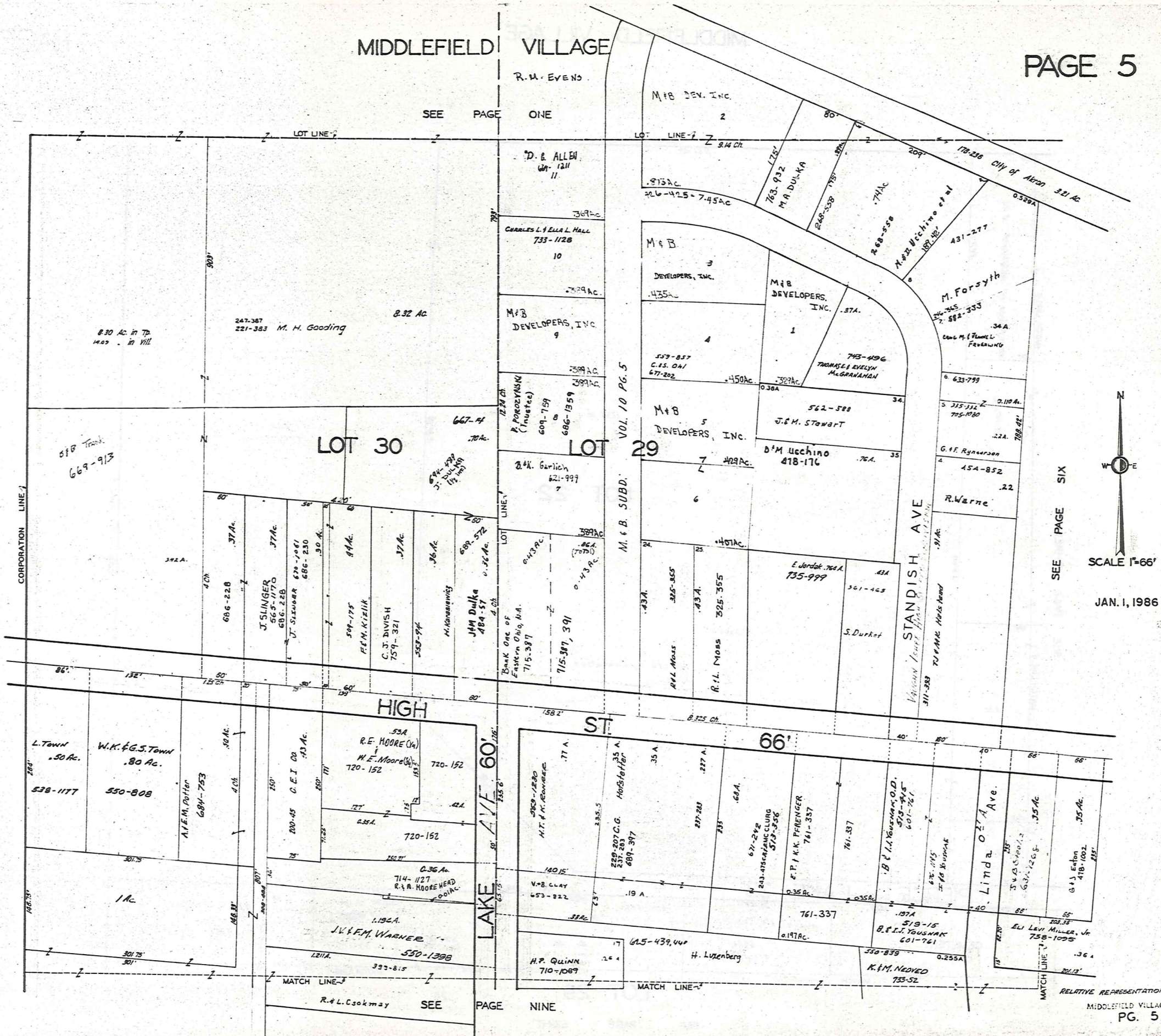
JAN. 1, 1986

RELATIVE REPRESENTATION

MIDDLEFIELD VILLAGE PG. 4

SEE PAGE EIGHT

MIDDLEFIELD VILLAGE



JAN. 1, 1986

SEE PAGE SIX

SEE PAGE ONE

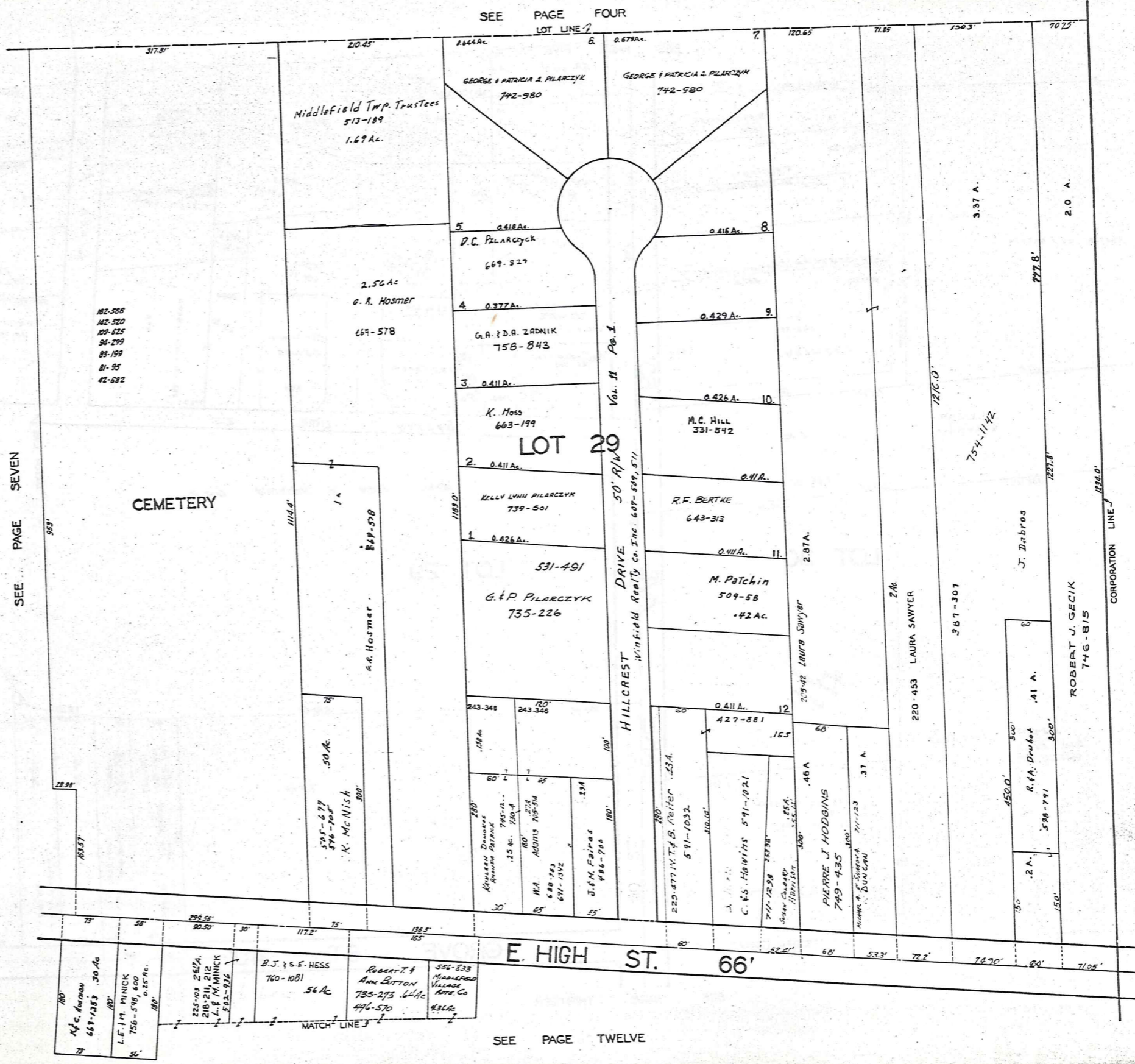
SEE PAGE NINE

RELATIVE REPRESENTATION  
MIDDLEFIELD VILLAGE  
PG. 5





SEE PAGE FOUR  
LOT LINE 7

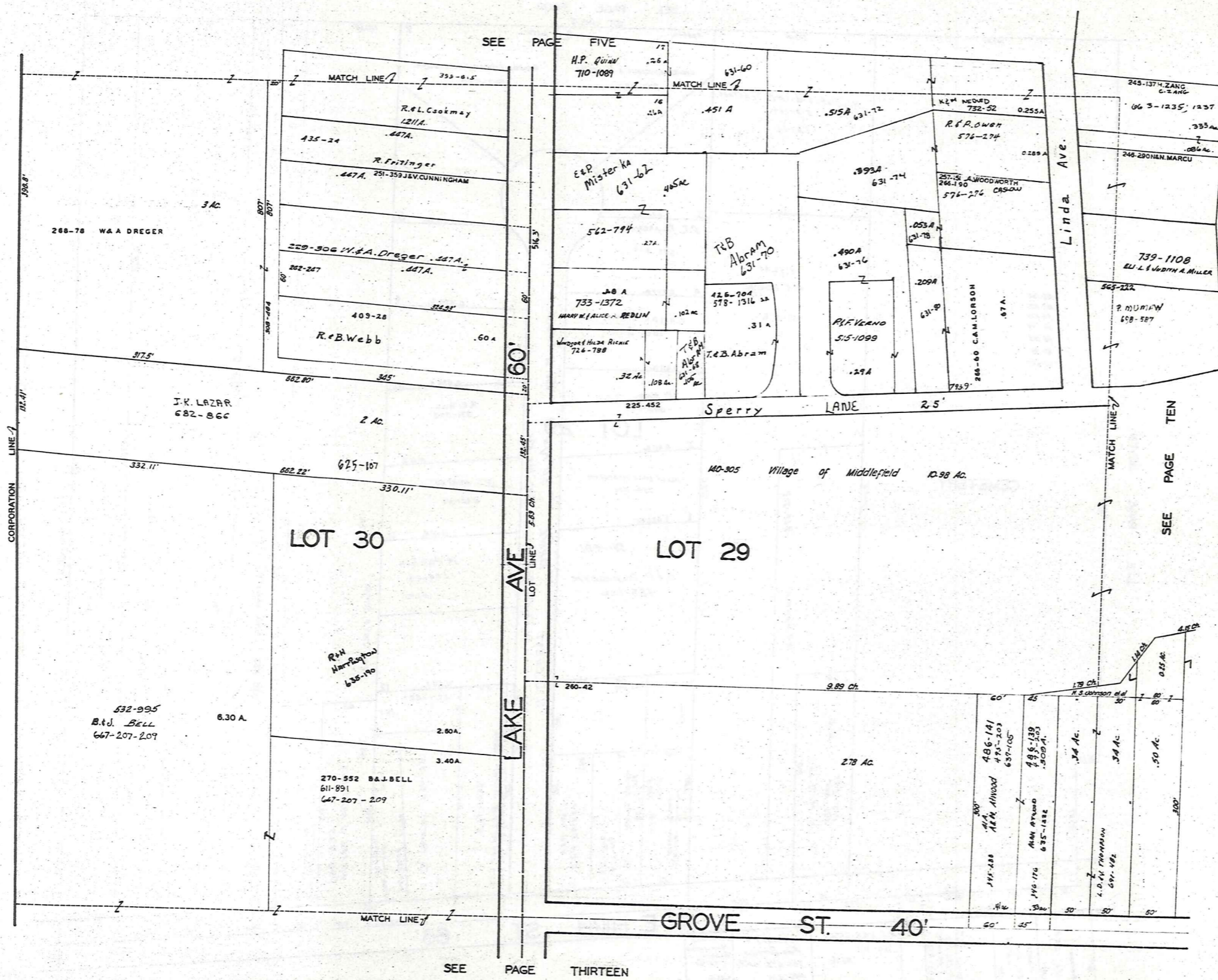


N  
W E  
SCALE 1"=66'  
JAN. 1, 1986

SEE PAGE SEVEN

SEE PAGE TWELVE

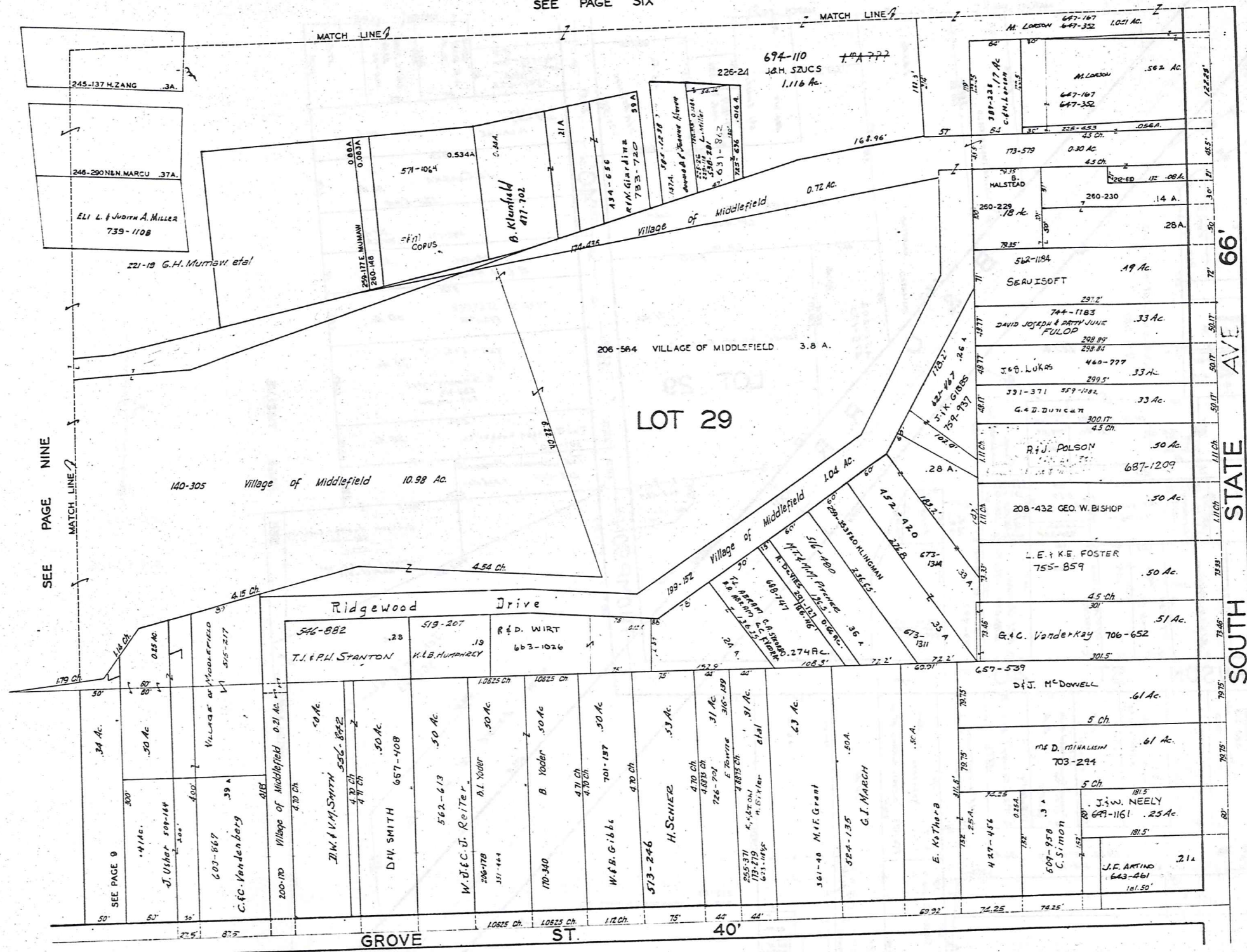
RELATIVE REPRESENTATION  
MIDDLEFIELD VILLAGE  
PG. 8



JAN. 1, 1986

RELATIVE REPRESENTATION  
MIDDLEFIELD VILLAGE  
PG. 9

SEE PAGE SIX



SEE PAGE NINE

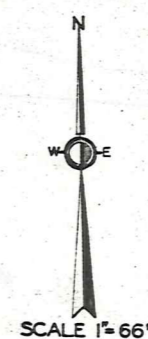
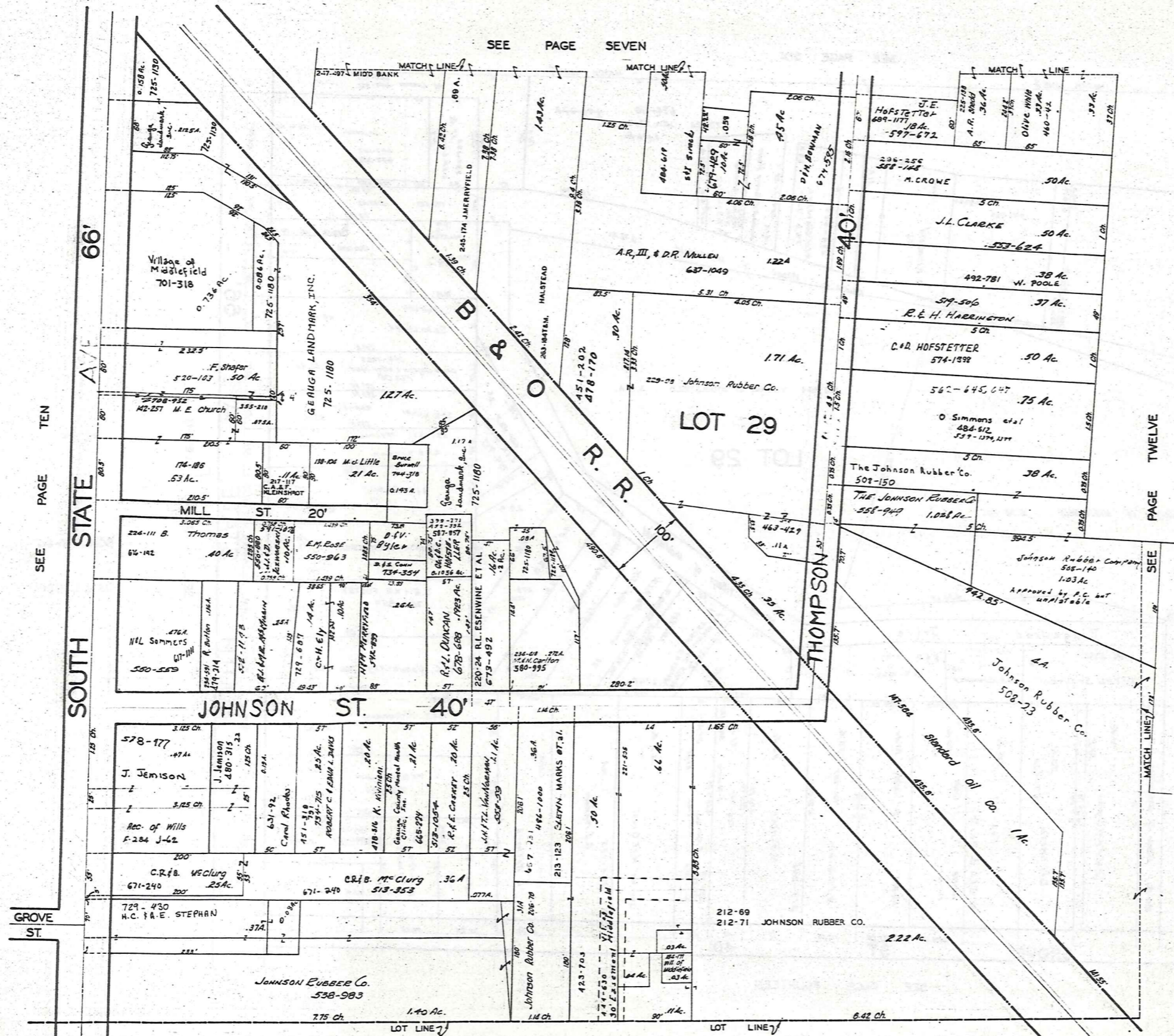
SEE PAGE ELEVEN



JAN. 1, 1986

SEE PAGE FOURTEEN

RELATIVE REPRESENTATION  
MIDDLEFIELD VILLAGE  
PG. 10



SCALE 1"=66'

JAN. 1, 1986

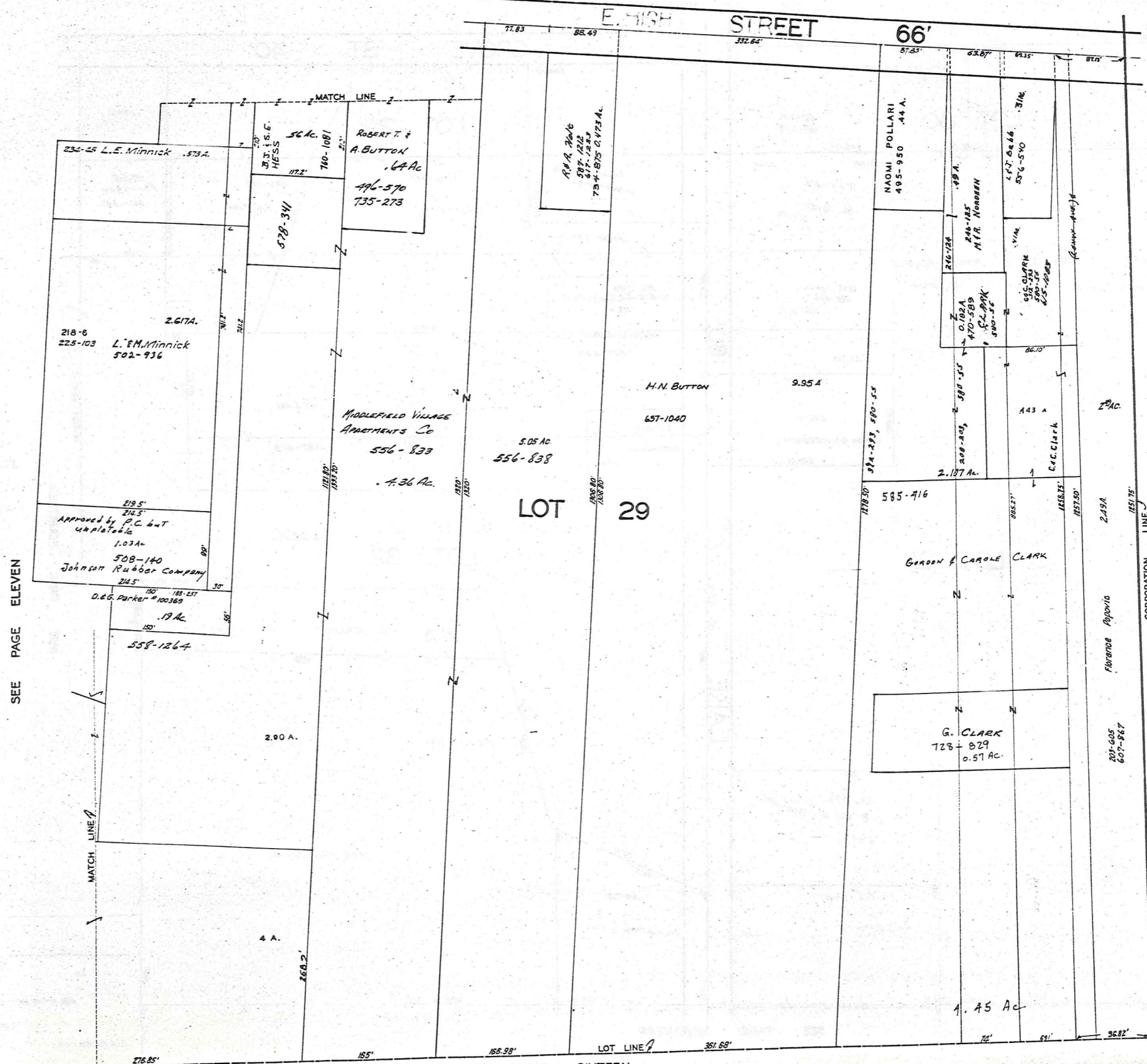
RELATIVE REPRESENTATION

SEE PAGE TEN

SEE PAGE TWELVE

SEE PAGE FIFTEEN

SEE PAGE EIGHT



SEE PAGE ELEVEN

SEE PAGE SIXTEEN

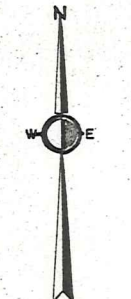
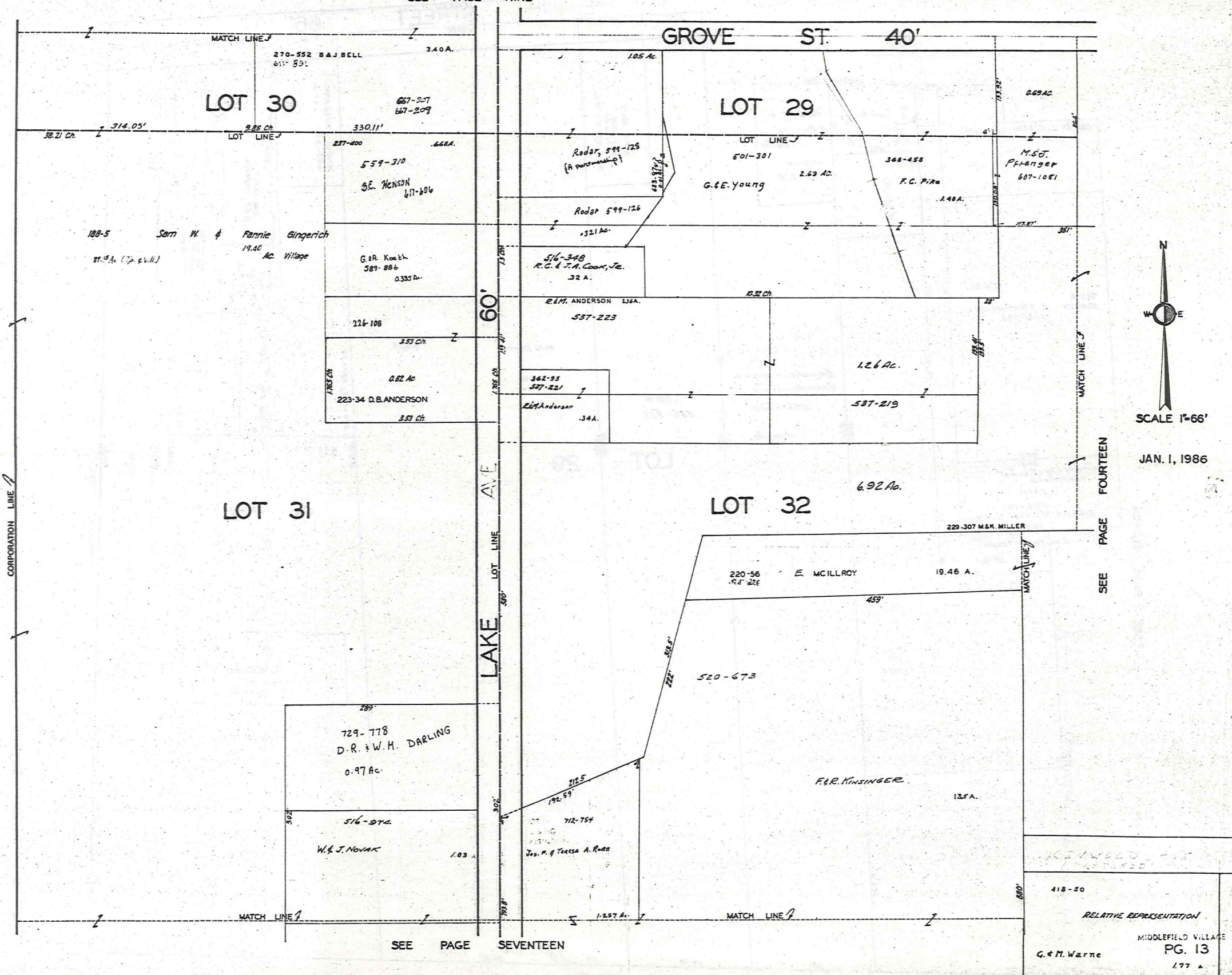


SCALE 1"=66'

JAN. 1, 1986

RELATIVE REPRESENTATION  
 MIDDLEFIELD VILLAGE  
 PG. 12

SEE PAGE NINE



SCALE 1"=66'

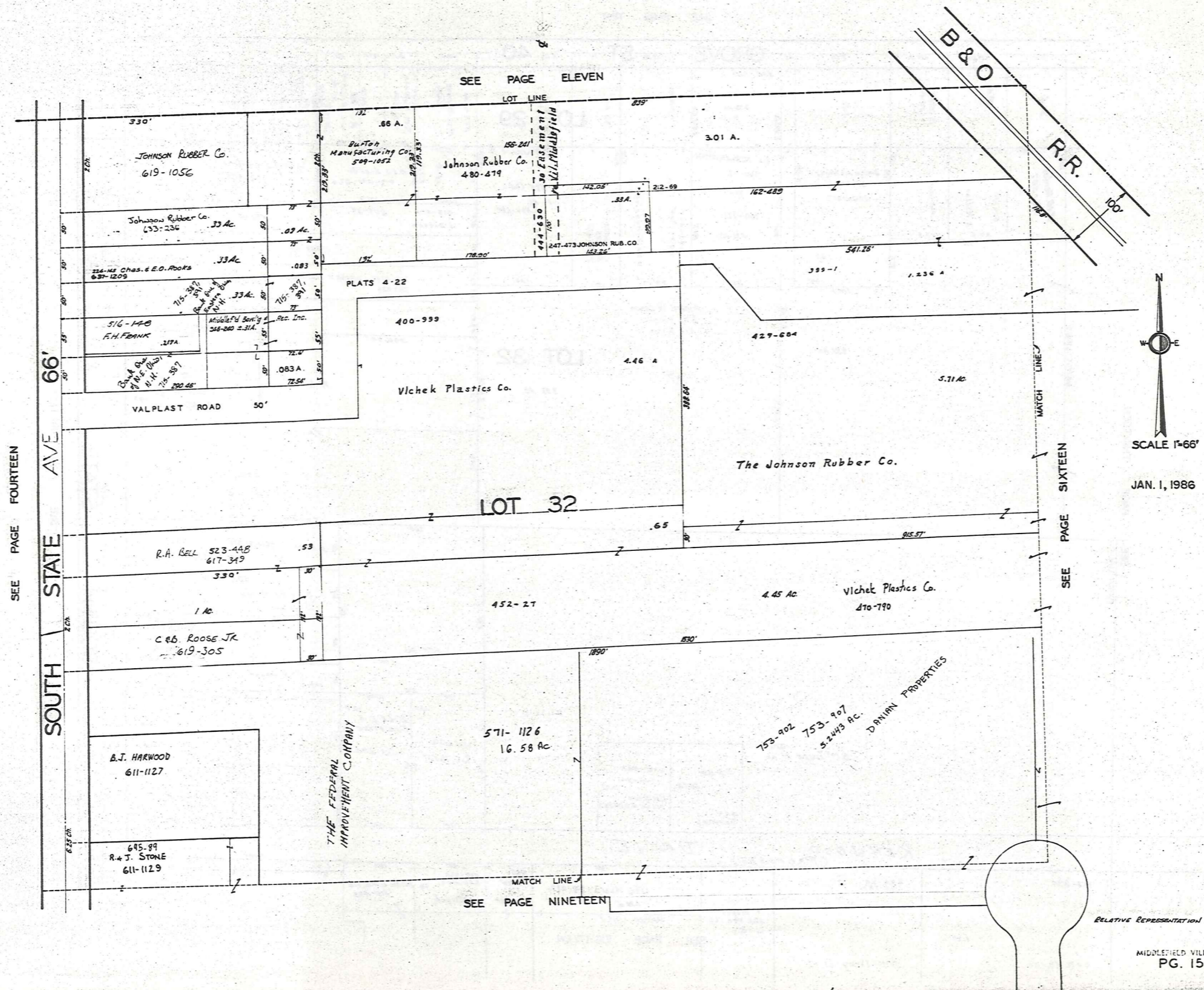
JAN. 1, 1986

SEE PAGE FOURTEEN

SEE PAGE SEVENTEEN

RELATIVE REPRESENTATION  
 MIDDLEFIELD VILLAGE  
 PG. 13  
 G. & M. Warner  
 197 A.





SEE PAGE FOURTEEN

SOUTH STATE AVE 66'

SEE PAGE ELEVEN

LOT LINE

B & O

R.R.



SCALE 1"=66'

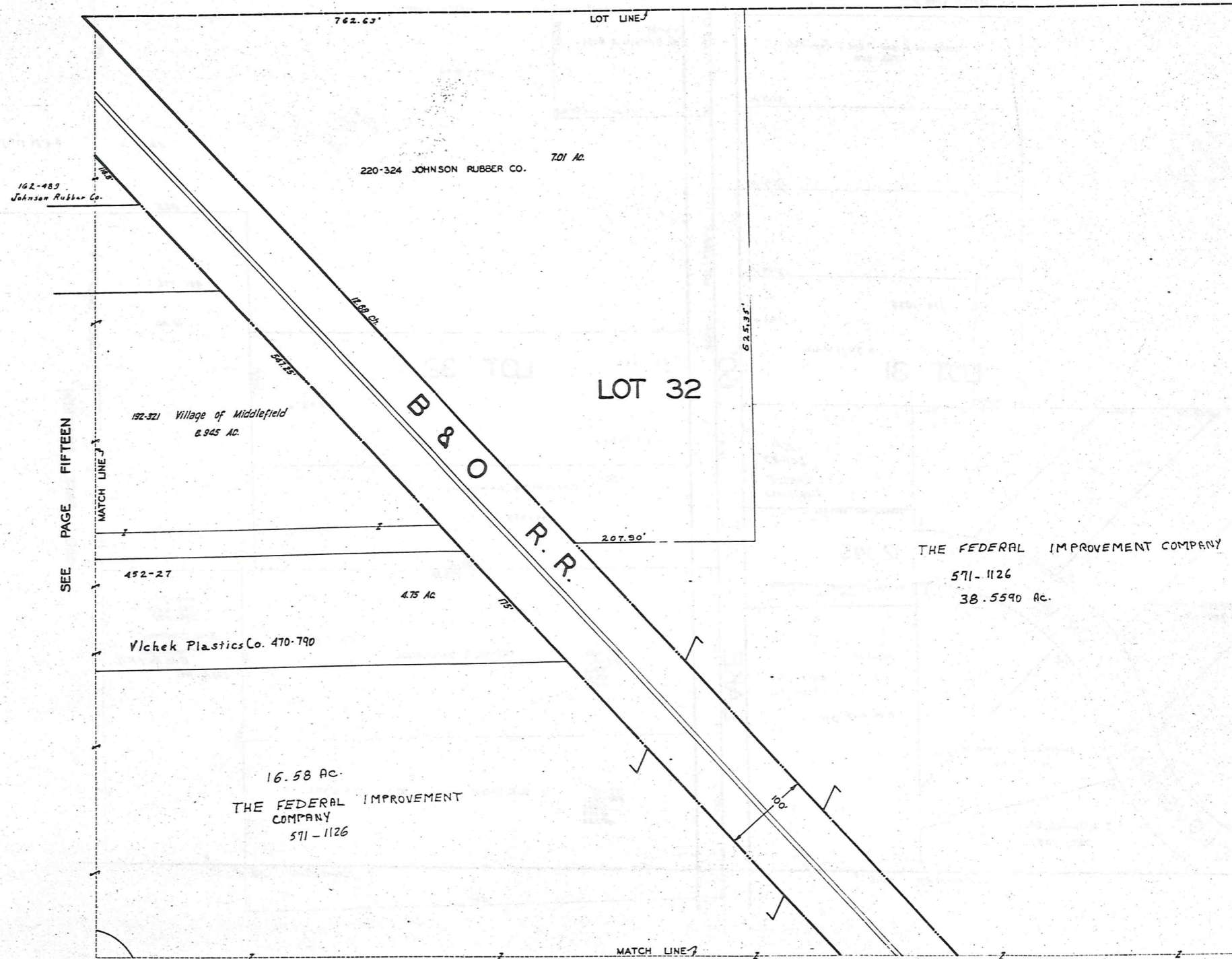
JAN. 1, 1986

SEE PAGE SIXTEEN

SEE PAGE NINETEEN

RELATIVE REPRESENTATION

SEE PAGE TWELVE



SEE PAGE FIFTEEN

SEE PAGE 21

SEE PAGE TWENTY



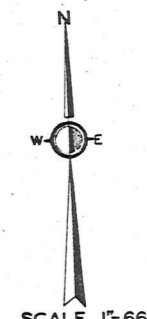
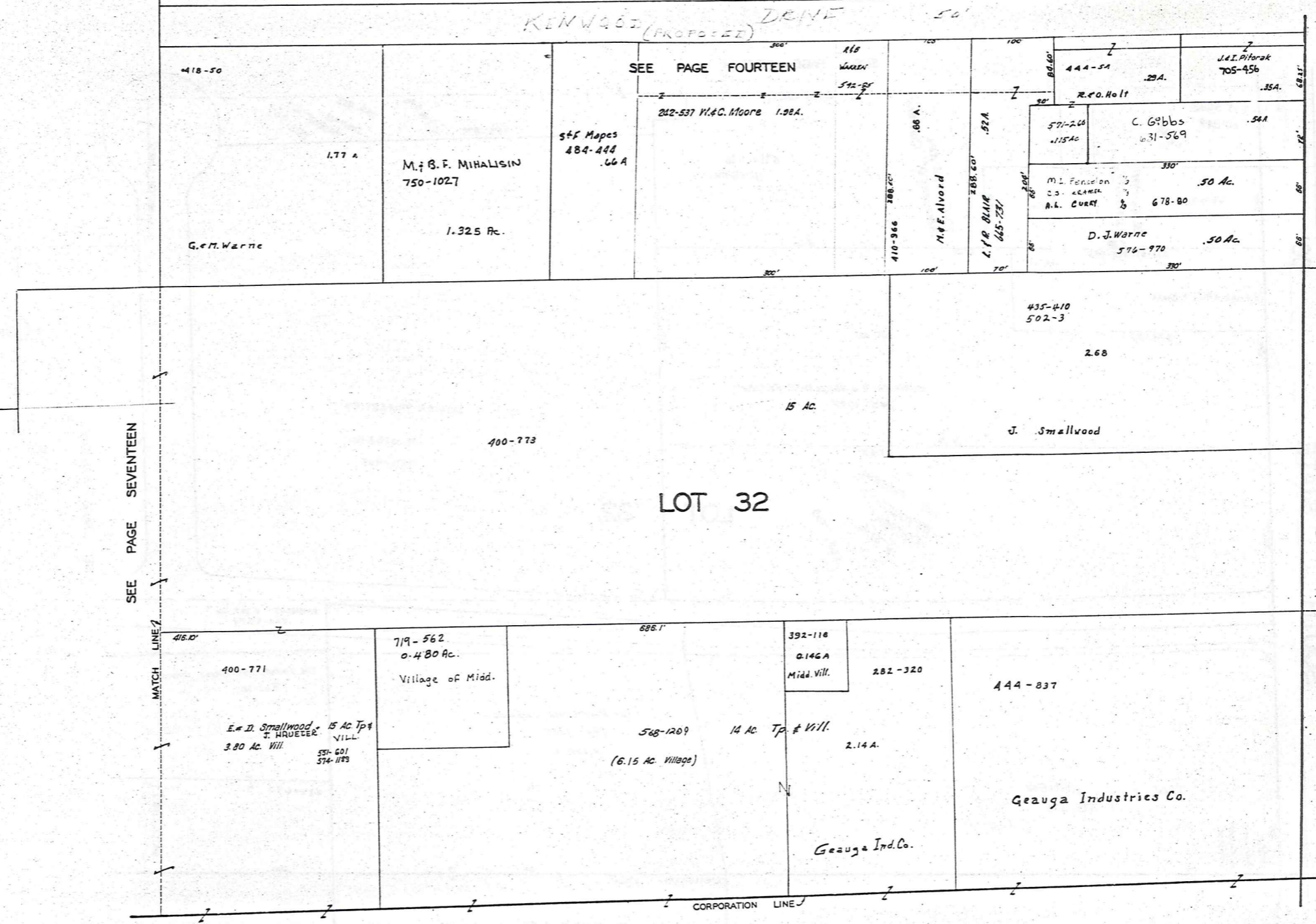
SCALE 1"=66'

JAN. 1, 1986

RELATIVE REPRESENTATION



KENWOOD (PROPOSED) DRIVE 50'



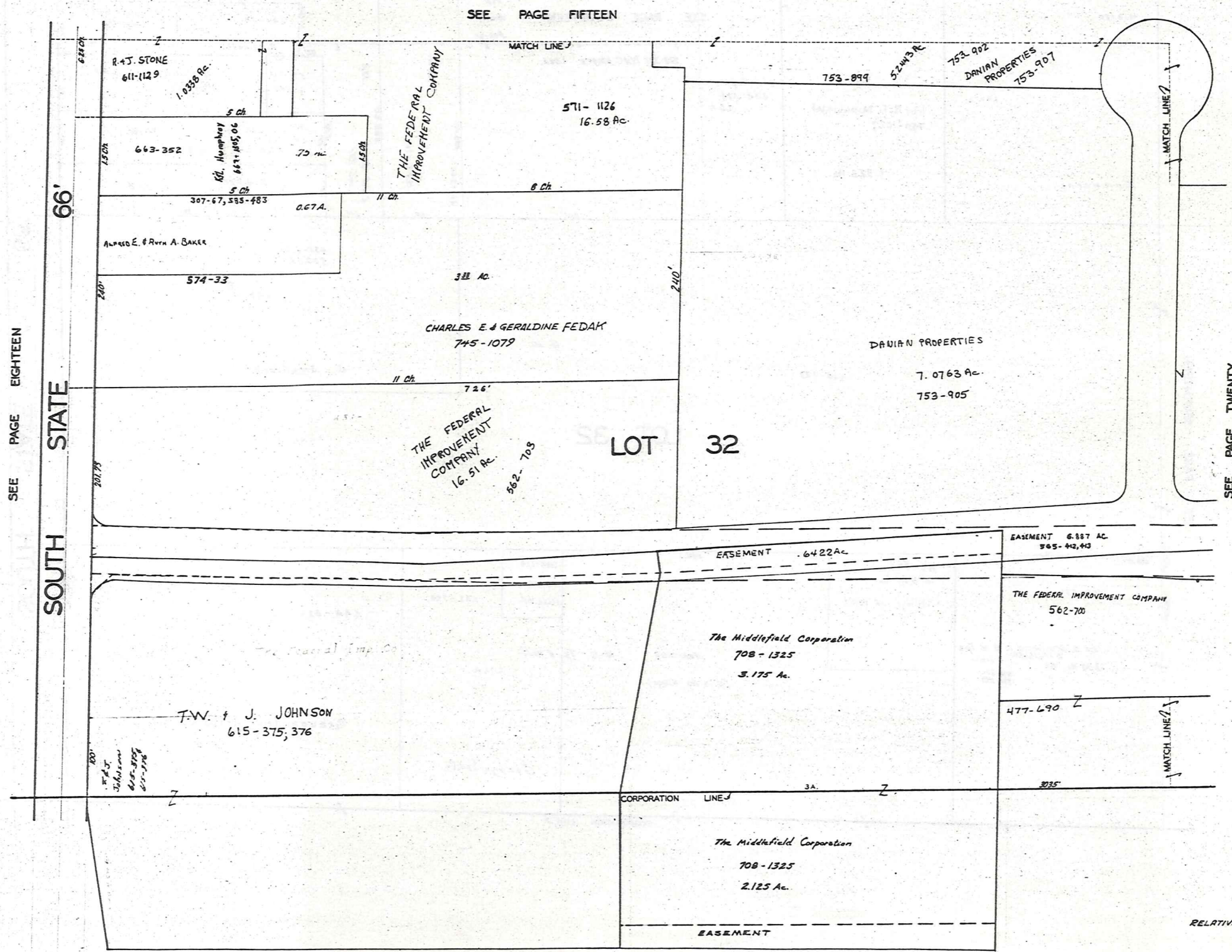
SCALE 1"=66'  
 JAN. 1, 1986

SEE PAGE NINETEEN

SOUTH STATE AVE 66'

SEE PAGE SEVENTEEN

RELATIVE REPRESENTATION



N  
W  
E

SCALE 1"=66'

JAN. 1, 1986

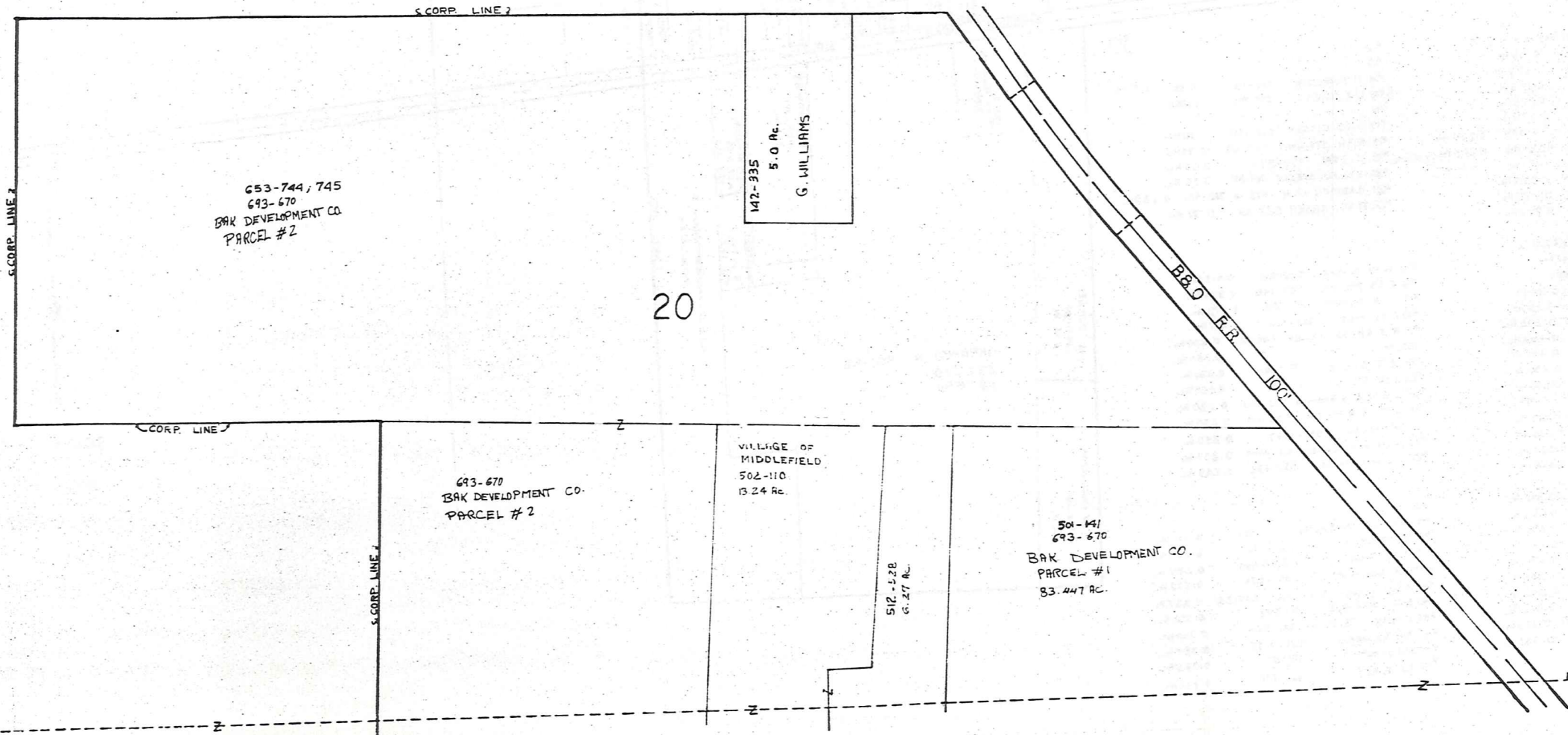
RELATIVE REPRESENTATION

MIDDLEFIELD VILLAGE  
PG. 19



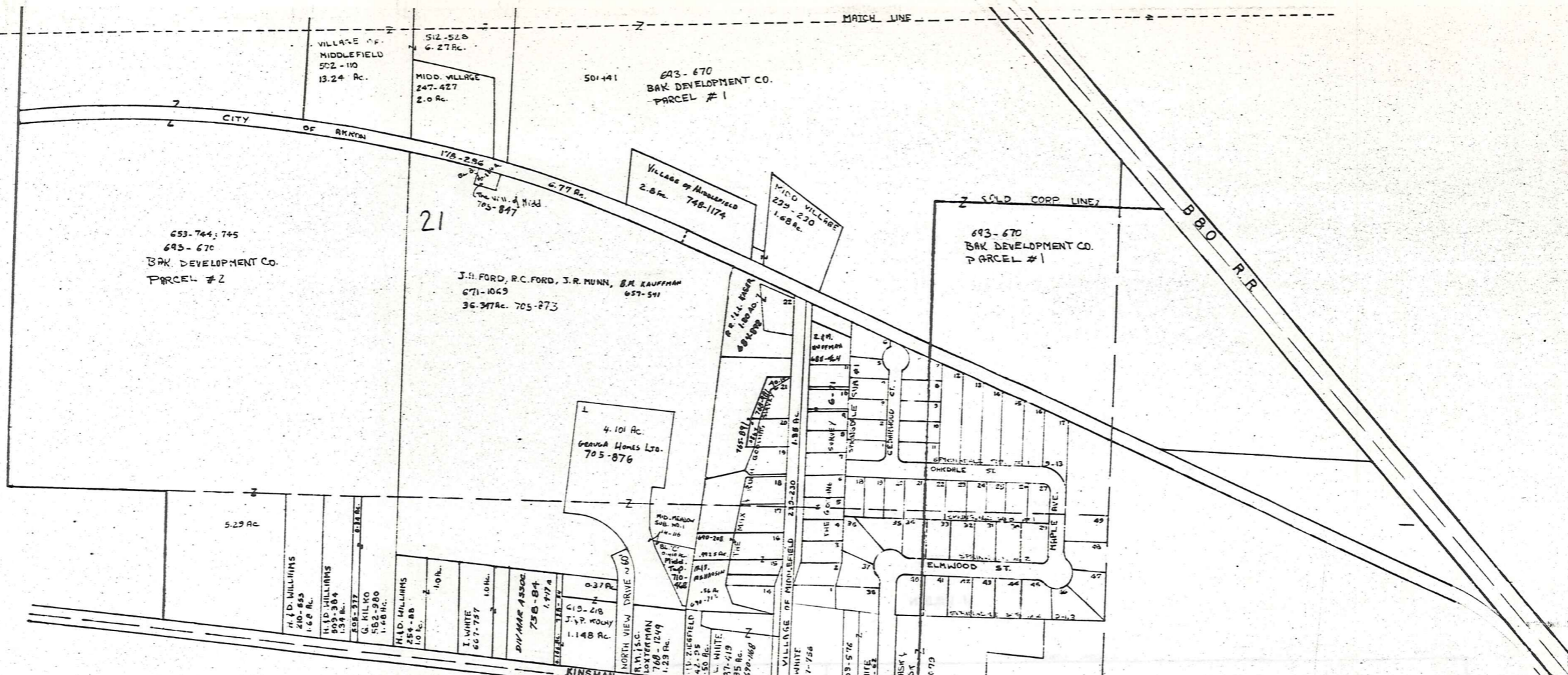


W. WALDEN



SCALE 1"=200'  
 JAN. 1, 1986  
 RELATIVE REPRESENTATION

MIDDLEFIELD VILLAGE  
 PG. 22



- THE MAX H. & RUTH B. GOODING SURVEY ~ G-71
- #1 N. NELSON 562-720 0.26 Ac.
  - #2 J. & J. STEVENS 615-392 0.275 Ac.
  - #3 F. FALES 387-456 0.275 Ac.
  - #4 S. L. THOMAS 480-812 0.275 Ac.
  - #5 T. R. MOSS 553-1276 0.275 Ac.
  - #6 L. McELROY & L. EDWARDS 710-586 0.275 Ac.
  - #7 R. E. CHRISTOFFERSON 452-100 0.275 Ac.
  - #8 " " " " " " " "
  - #9 J. M. BORKHOLTER 495-418 0.275 Ac.
  - #10 R. M. YARNENT 391-146 0.275 Ac.
  - #11 G. J. TROFF 495-250 0.275 Ac.

- SPRINGDALE SUBDIVISION NO. 1 & NO. 2
- #1 D. M. PATTEN 705-121 0.247 Ac.
  - #2 K. QUILLEN 550-892 0.25 Ac.
  - #3 C. H. P. L. WISEMAN 537-644 0.25 Ac.
  - #4 J. M. & M. A. LEWIS 550-505 0.25 Ac.
  - #5 G. W. & B. J. WILKES 537-633 0.235 Ac.
  - #6 C. W. LANGHAM 562-906 0.293 Ac.
  - #7 P. & K. NICHOLS 611-471 0.247 Ac.
  - #8 T. W. WILLIAMS 591-872 0.250 Ac.
  - #9 R. D. BARCOWSKI 537-924 0.250 Ac.
  - #10 E. C. & J. E. TROFF 734-289 .05 Ac.
  - #11 R. E. STEWART 593-782 0.247 Ac.
  - #12 E. E. SELBY 484-600 0.580 Ac.
  - #13 M. E. BRILLA et al. 485-34 0.524 Ac.
  - #14 W. B. OSMOND 576-1033 0.468 Ac.

- #29 G. H. BURRIS 657-893 0.332 Ac.
- #30 MARY L. SWANSON 727-64 0.283 Ac.
- #31 J. BALASZ 559-1395 0.283 Ac.
- #32 T. L. V. McEANEY 551-201 0.283 Ac.
- #33 W. & K. BLUE 591-1090 0.283 Ac.
- #34 R. D. KLEPPER 593-722 0.282 Ac.
- #35 K. E. FERRI 551-256 0.335 Ac.
- #36 B. MAZZONE 551-181 0.362 Ac.
- #37 C. WATSON 760-1227; 553-298 0.333 Ac.
- #38 R. S. PETRICK 661-337 0.333 Ac.

- 30
- #12 " " " " " " " "
  - #13 " " " " " " " "
  - #14 M. MIHALISIN 410-136 0.58 Ac. 1/2 # 15
  - #15 L. K. JONES 670-201 0.26 Ac.
  - #16 " " " " " " " "
  - #17 D. S. CLARKE 576-1354 0.39 Ac.
  - #18 R. H. STEWART 663-109 0.35 Ac.
  - #19 C. TEAL 479-917 0.35 Ac.
  - #20 J. W. B. STEELE 765-891 0.26 Ac.
  - #21 M. LARSON et al. 578-15; 768-981 0.23 Ac.
  - #22 R. W. KRASER 524-33 0.37 Ac.

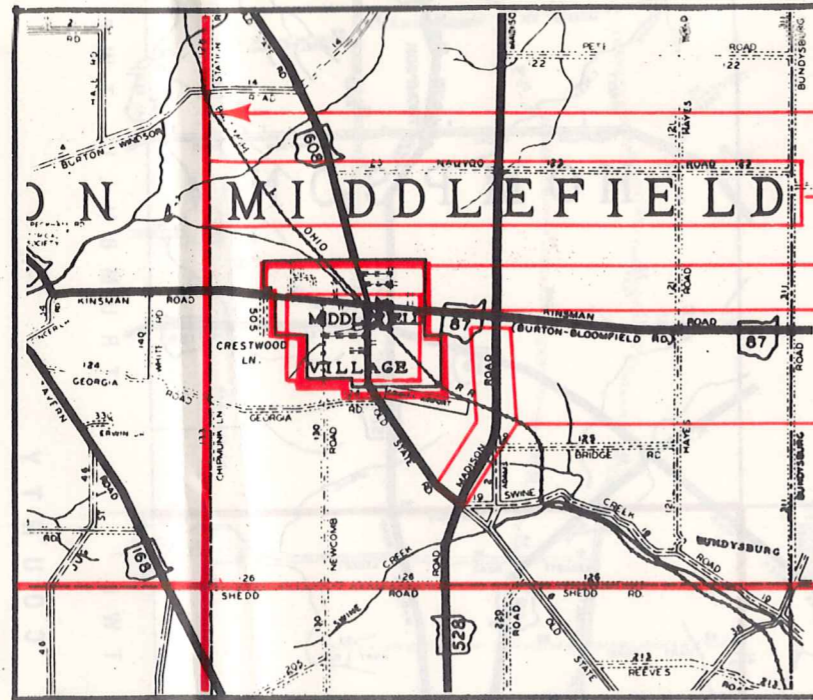
- #15 W. B. OSMOND 576-1082 0.412 Ac.
- #16 C. S. FULLMAN 537-745 0.356 Ac.
- #17 R. DeMARCO 693-1266 0.373 Ac.
- #18 C. L. PYLE 665-302 0.237 Ac.
- #19 R. J. & M. DETWELER 582-226 0.250 Ac.
- #20 " " " " " " " "
- #21 E. C. Ziegler 702-551 0.250 Ac.
- #22 J. D. SMITH 617-728 0.250 Ac.
- #23 L. G. & L. EIERMANN 593-303 0.250 Ac.
- #24 W. E. B. R. MATCH 538-109 0.250 Ac.
- #25 M. BARLOW 537-1047 0.250 Ac.
- #26 M. M. PFERENGEE 537-1097 0.237 Ac.
- #27 J. L. & V. MILLER 537-632 0.249 Ac.

- #30 " " " " " " " "
- #31 " " " " " " " "
- #32 " " " " " " " "
- #33 " " " " " " " "
- #34 " " " " " " " "
- #35 " " " " " " " "
- #36 " " " " " " " "
- #37 " " " " " " " "
- #38 " " " " " " " "
- #39 " " " " " " " "
- #40 W. R. D. M. CANTENOR 552-913 0.333 Ac.
- #41 J. BRUCE 663-711 0.281 Ac.
- #42 R. P. FISHEL 559-420 0.280 Ac.
- #43 C. J. BRIGHAM 551-574 0.279 Ac.
- #44 Adm. Wellington Meth. Ch. 647-541 0.237 Ac.
- #45 D. T. SCRIGGS 551-572 0.332 Ac.
- #46 J. W. H. M. BLASUS 551-540 0.350 Ac.
- #47 R. A. BA. BRAUN 556-1077 0.357 Ac.
- #48 W. D. MUPP 731-81 0.335 Ac.
- #49 W. J. SLY 766-771 0.332 Ac.

SCALE 1" = 200'  
 JAN. 1, 1986  
 RELATIVE REPRESENTATION

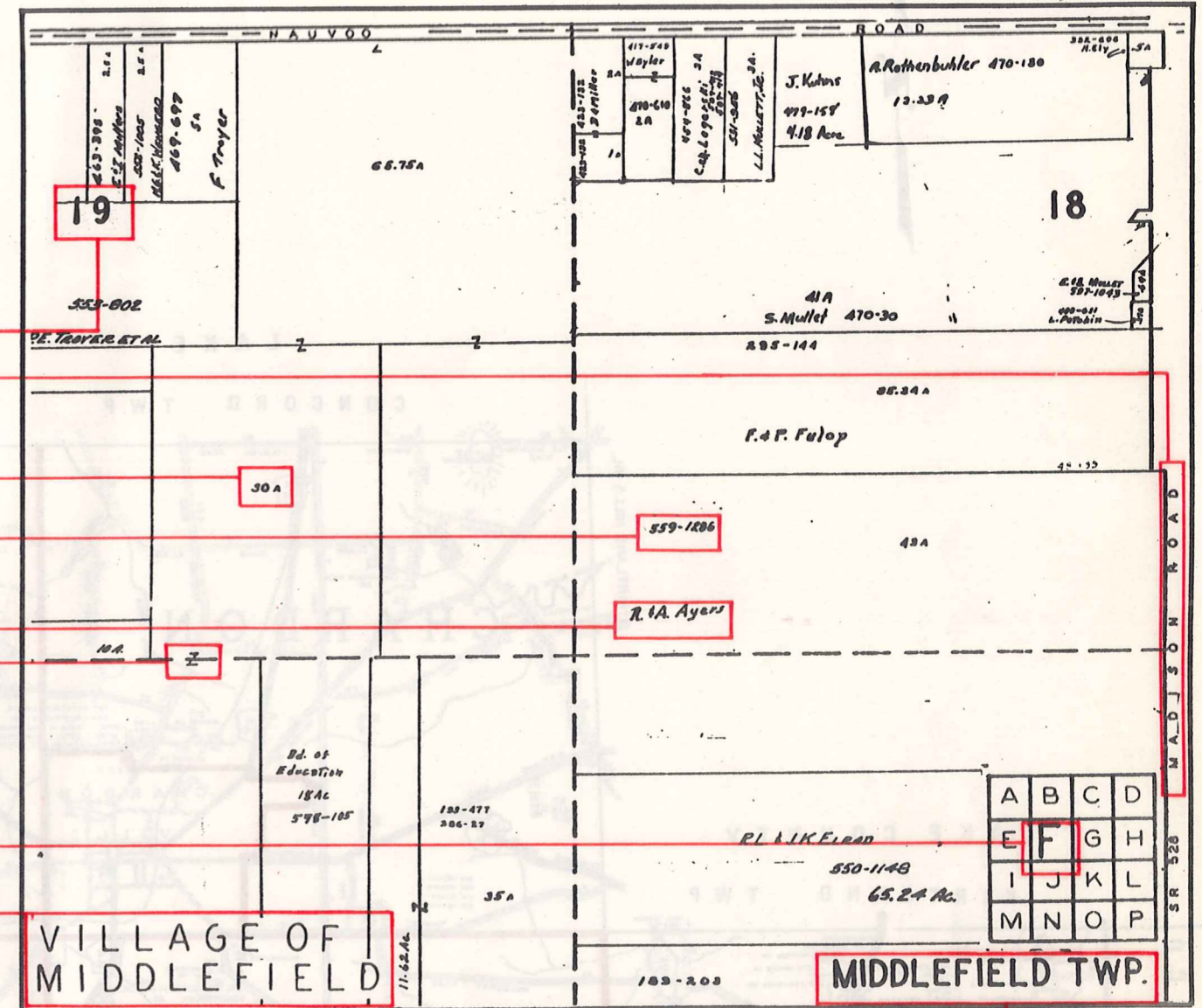
# Explanation and Use Sheet for Geauga County, Ohio

SAMPLE (PARTIAL) COUNTY INDEX MAP



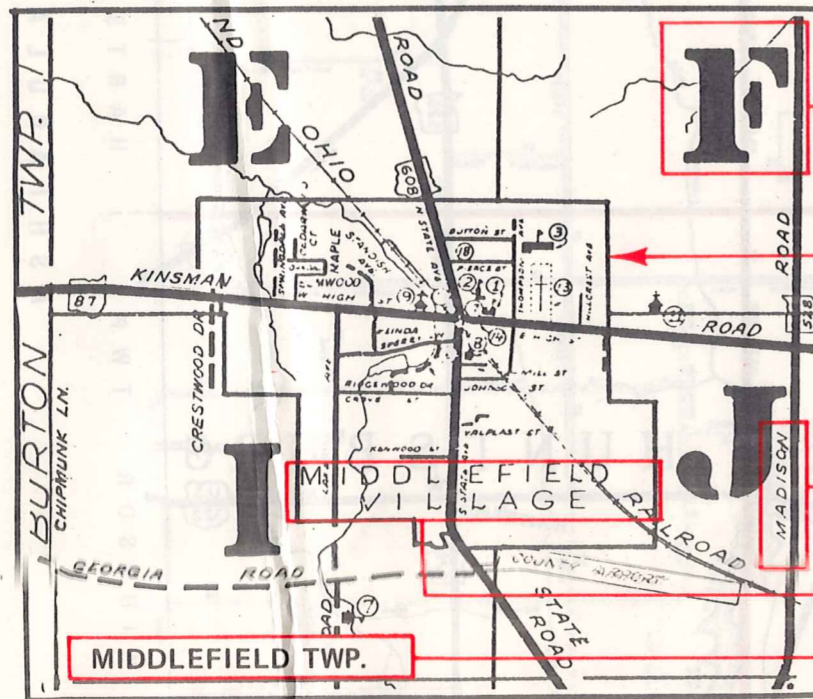
- Township Boundary
- Township Name
- Village Boundary
- Village Name
- Tract Lot Number
- Street Name
- Acreage
- Deed Book & Page
- Owners Name
- Denotes Continous Ownership

SAMPLE (PARTIAL) MAP PAGE



- Map Page Number
- Village Name
- Village Boundary
- Township Name

SAMPLE (PARTIAL) MUNICIPALITY INDEX MAP



- Street Name
- Village Name
- Township Name

## USE OF THE MAP VOLUME

1. LOCATE THE GENERAL AREA OF INTEREST ON THE COUNTY INDEX MAP, ATLAS PAGE 'B', AND NOTE THE MUNICIPALITY NAME (TOWNSHIP OR VILLAGE).
2. REFER TO THE TABLE OF CONTENTS, ATLAS PAGE 'C', AND NOTE THE BEGINNING ATLAS PAGE NUMBER FOR THE MUNICIPALITY OF INTEREST.
3. TURN TO THE PAGE INDICATED. ON THIS PAGE WILL APPEAR AN INDEX MAP FOR THAT MUNICIPALITY.
4. LOCATE THE GENERAL AREA OF INTEREST AND NOTE THE MAP PAGE NUMBER. THIS MAY BE EITHER A LETTER OR A NUMBER.
5. MAP PAGES ARE IN ALPHABETICAL (OR NUMERICAL) SEQUENCE FOLLOWING THE MUNICIPALITY INDEX MAP. FOLLOW SEQUENCE TO THE MAP PAGE INDICATED.
6. LOCATE SPECIFIC PARCEL OF INTEREST AND NOTE THE DESIRED INFORMATION.

NOTE: ON SOME MAPS YOU MAY BE REFERRED TO A DETAIL SHEET SHOWING AN ENLARGEMENT OF THE AREA. THESE MAPS ARE FOUND AT THE END OF THE REGULAR MAP PAGES IN EACH MUNICIPALITY IN EITHER ALPHABETICAL OR NUMERICAL SEQUENCE.

NOTE: CHARDON VILLAGE HAS TITLE SHEETS. TO LOCATE OWNERS NAME, NOTE THE PARCEL NUMBER, REFER TO THE TITLE PAGE FOLLOWING THE MAP OF INTEREST, FOLLOW NUMERICAL SEQUENCE TO THE PARCEL NUMBER OF INTEREST AND NOTE THE DESIRED INFORMATION. IN ALL OTHER MUNICIPALITIES THE OWNERS NAME APPEARS ON THE MAP PAGE.

This book is the property of REAL ESTATE DATA, INC. and is distributed by REDI under a leasing arrangement requiring return to REDI upon termination of the lease. REDI reserves the right to reclaim this book if found in the possession of any firm or person where possession was obtained through any unauthorized source.